

# Versa-Nut™ Insert OVN01

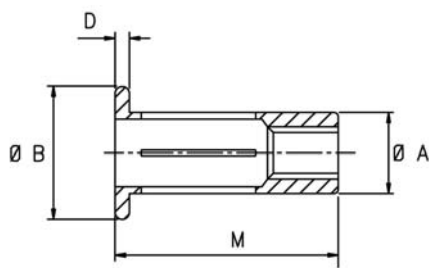
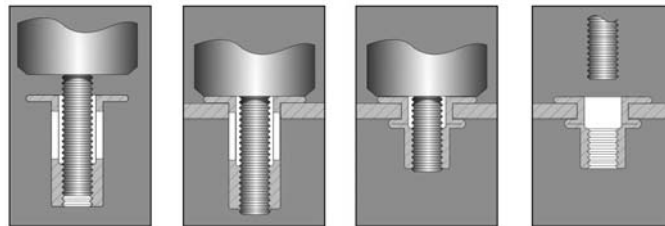
Steel, Large Flange, Open End.

## Key Features

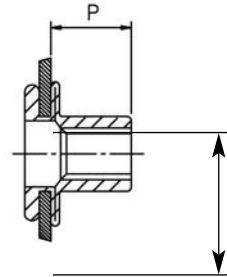
- For soft materials, plastics and composites
- High strength and pull out resistance
- Wide grip capability



Material	Finish
Low carbon steel to BS 3111 Type O, SAE 1008, DIN 1654 Qst 34-3	Zinc plated to BS 3382 and yellow passivated to achieve 96 hours resistance to red corrosion (ASTM B117)



BEFORE PLACING



AFTER PLACING

- A = Body Diameter
- B = Lip Diameter
- D = Lip Thickness
- J = Blind Side Bulb Protrusion
- M = Overall Length Unplaced
- P = Blind Side Protrusion

## Dimensions in millimetres

Thread Size	Grip Range	Recommended hole sizes (mm)	Part Number	ø A max.	ø B max.	ø D max.	ø J max.	ø M max.	ø P max.
M4 x 0.7	0.50 to 3.80 3.80 to 6.85	6.13 6.25	OVN01-02422	6.12	11.34	1.09	14.0	18.01	8.60
			OVN01-02426					21.16	
M5 x 0.8	0.50 to 4.45 4.45 to 8.10	7.48 7.62	OVN01-02528	7.47	12.95	1.09	18.0	22.39	9.90
			OVN01-02531					25.16	
M6 x 1.0	0.50 to 7.10 7.10 to 12.70	8.80 8.93	OVN01-02634	8.79	16.12	1.63	22.0	27.30	12.80
			OVN01-02641					33.22	
M8 x 1.25	0.50 to 7.10 7.10 to 12.70	11.11 11.50	OVN01-02838	11.10	19.29	1.70	26.0	30.92	14.47
			OVN01-02846					36.87	
M10 x 1.5	0.50 to 7.10 7.10 to 12.70	13.07 13.26	OVN01-02042	13.06	22.48	2.37	30.0	33.58	15.75
			OVN01-02049					39.14	

## Recommended Max Torque (Nm)

M5	M6	M8
7.9	12.4	32.0

Recommended maximum torque as applied to a joint with a static top plate.

Thread of insert will not be damaged. However this torque value may exceed the strength of the screw or bolt in question.

Always refer to the recommended tightening torque limits for the screw or bolt.