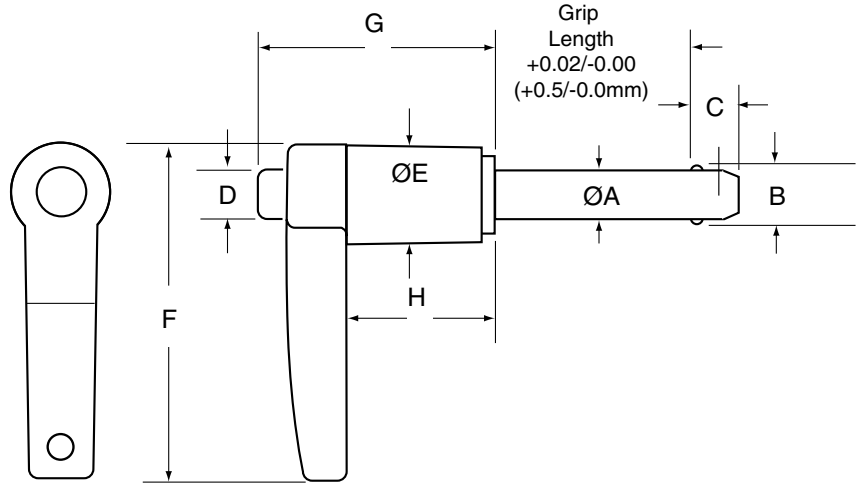


# L-Handle Kwik-Lok Pin MS17986



## L-Handle Specifications - Inch

Nom Pin Dia	ØA		±0.005 B	+0.00/-0.04 C	D	E	F	G	H
	Min	Max							
3/16 (#10)	.1870	.1885	.220	.260	1/4	1/2	1 3/4	1 1/4	3/4
1/4	.2470	.2485	.289	.290	1/4	1/2	1 3/4	1 1/4	3/4
5/16	.3095	.3110	.375	.330	1/4	1/2	1 3/4	1 1/4	3/4
3/8	.3720	.3735	.440	.365	5/16	19/32	2	1 7/16	15/16
7/16	.4345	.4360	.509	.380	5/16	19/32	2	1 7/16	15/16
1/2	.4970	.4985	.594	.460	15/32	3/4	2 1/4	1 5/8	1
9/16	.5595	.5610	.666	.510	15/32	3/4	2 1/4	1 5/8	1
5/8	.6220	.6235	.750	.580	9/16	15/16	2 1/2	1 31/32	1 3/16
3/4	.7470	.7485	.887	.670	5/8	15/16	2 1/2	1 31/32	1 3/16
7/8	.8720	.8735	1.046	.760	3/4	1 1/4	3 1/4	2 1/4	1 11/32
1	.9970	.9985	1.209	.890	3/4	1 1/4	3 1/4	2 1/4	1 11/32

- The L-Handle Kwik-Lok Pin provides a firm grip for applications where a T-Handle will not fit.
- Handle is black cast aluminum and the button is blue anodized aluminum.
- Pin body available in:  
Heat Treated 17-4 PH Stainless Steel  
or Heat Treated Alloy Steel, Cadmium plated.
- Includes hole and split ring for easy attachment of optional lanyard.

## L-Handle Specifications - Metric

Nom Pin Dia	ØA		±0.25 B	+0.0/-1.0 C	D	E	F	G	H
	Min	Max							
5	4.92	4.96	5.54	6	6.5	13.1	44.9	31.3	19.7
6	5.92	5.96	6.99	7	6.5	13.1	44.9	31.3	19.7
8	7.92	7.96	9.42	8	6.5	13.1	44.9	31.3	19.7
10	9.92	9.96	11.86	9	7.7	15.1	50.8	36.1	24.0
12	11.92	11.96	14.45	10	11.1	19.1	57.2	41.9	25.8
16	15.92	15.96	19.00	14	14.5	23.9	63.0	49.8	30.1
20	19.92	19.96	24.08	17	26.2	23.9	63.0	49.8	30.1
25	24.92	24.96	30.94	22	26.2	32.4	82.6	55.9	33.9

Dimensions in millimeters

All data is subject to change without notice, please contact our technical department to confirm data

# KWIK-LOK™ PINS

## L-Handle - Inch

Pin Dia	Grip Length (inches)												
	0.5	0.75	1	1.25	1.5	1.75	2	2.5	3	4	5	6	
<b>Stainless Steel - High Strength Stainless Steel, 17-4 PH heat treated</b>													
PARTS	3/16	801400	801401	801402	801403	801404	801405	801406	801408	801409	801411	801413	801415
	1/4	801416	801417	801418	801419	801420	801421	801422	801424	801425	801427	801429	801431
	5/16	801432	801433	801434	801435	801436	801437	801438	801440	801441	801443	801445	801447
	3/8	801448	801449	801450	801451	801452	801453	801454	801456	801457	801459	801461	801463
	7/16	801464	801465	801466	801467	801468	801469	801470	801472	801473	801475	801477	801479
	1/2	801480	801481	801482	801483	801484	801485	801486	801488	801489	801491	801493	801495
	9/16	801496	801497	801498	801499	801500	801501	801502	801504	801505	801507	801509	801511
	5/8	801512	801513	801514	801515	801516	801517	801518	801520	801521	801523	801525	801527
	3/4	801528	801529	801530	801531	801532	801533	801534	801536	801537	801539	801541	801543
	7/8	801544	801545	801546	801547	801548	801549	801550	801552	801553	801555	801557	801559
1	801560	801561	801562	801563	801564	801565	801566	801568	801569	801571	801573	801575	
<b>Alloy Steel - High Strength Alloy Steel, 4130 heat treated and cadmium plated, yellow trivalent chromium passivation</b>													
PARTS	3/16	801200	801201	801202	801203	801204	801205	801206	801208	801209	-	-	-
	1/4	801216	801217	801218	801219	801220	801221	801222	801224	801225	801227	801229	801231
	5/16	801232	801233	801234	801235	801236	801237	801238	801240	801241	801243	801245	801247
	3/8	801248	801249	801250	801251	801252	801253	801254	801256	801257	801259	801261	801263
	7/16	801264	801265	801266	801267	801268	801269	801270	801272	801273	801275	801277	801279
	1/2	801280	801281	801282	801283	801284	801285	801286	801288	801289	801291	801293	801295
	9/16	801296	801297	801298	801299	801300	801301	801302	801304	801305	801307	801309	801311
	5/8	801312	801313	801314	801315	801316	801317	801318	801320	801321	801323	801325	801327
	3/4	801328	801329	801330	801331	801332	801333	801334	801336	801337	801339	801341	801343
	7/8	801344	801345	801346	801347	801348	801349	801350	801352	801353	801355	801357	801359
1	801360	801361	801362	801363	801364	801365	801366	801368	801369	801371	801373	801375	

Contact customer service for other sizes. Includes attachment ring.

## L-Handle - Metric

Pin Dia	Grip Length (mm)												
	10	15	20	25	30	40	50	60	70	80	90	100	
<b>Stainless Steel - High Strength Stainless Steel, 17-4 PH heat treated</b>													
PARTS	5	851400	851401	851402	851403	851404	851405	851406	851407	851408	851409	851410	851411
	6	851412	851413	851414	851415	851416	851417	851418	851419	851420	851421	851422	851423
	8	851424	851425	851426	851427	851428	851429	851430	851431	851432	851433	851434	851435
	10	851436	851437	851438	851439	851440	851441	851442	851443	851444	851445	851446	851447
	12	851448	851449	851450	851451	851452	851453	851454	851455	851456	851457	851458	851459
	16	851460	851461	851462	851463	851464	851465	851466	851467	851468	851469	851470	851471
	20	851472	851473	851474	851475	851476	851477	851478	851479	851480	851481	851482	851483
PARTS	25	851484	851485	851486	851487	851488	851489	851490	851491	851492	851493	851494	851495
	<b>Alloy Steel - High Strength Alloy Steel, 4130 heat treated and cadmium plated, yellow trivalent chromium passivation</b>												
	5	851200	851201	851202	851203	851204	851205	851206	851207	851208	851209	851210	851211
	6	851212	851213	851214	851215	851216	851217	851218	851219	851220	851221	851222	851223
	8	851224	851225	851226	851227	851228	851229	851230	851231	851232	851233	851234	851235
	10	851236	851237	851238	851239	851240	851241	851242	851243	851244	851245	851246	851247
	12	851248	851249	851250	851251	851252	851253	851254	851255	851256	851257	851258	851259
	16	851260	851261	851262	851263	851264	851265	851266	851267	851268	851269	851270	851271
20	851272	851273	851274	851275	851276	851277	851278	851279	851280	851281	851282	851283	
25	851284	851285	851286	851287	851288	851289	851290	851291	851292	851293	851294	851295	

Contact customer service for other metric sizes. Includes attachment ring.